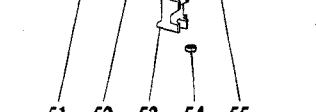
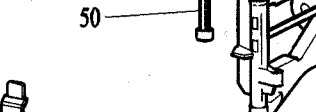
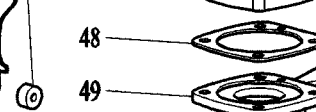
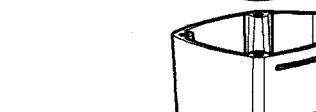
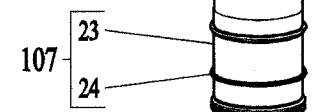
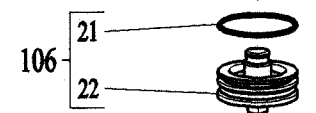
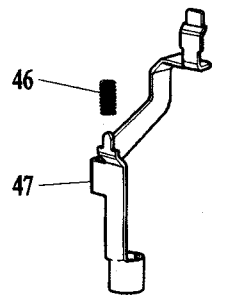
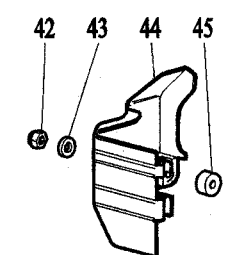
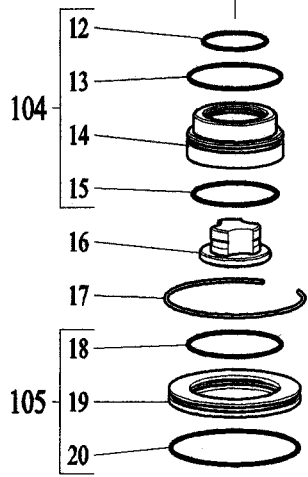
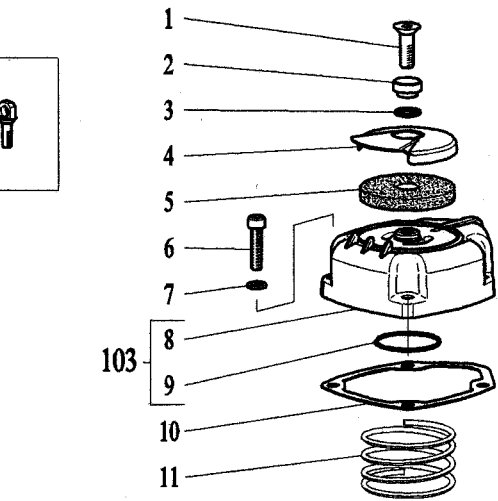
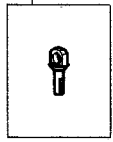
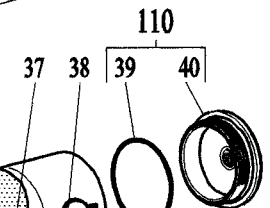
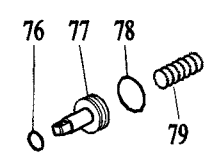
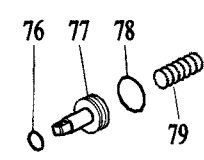
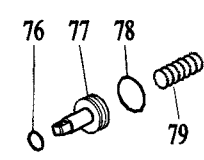
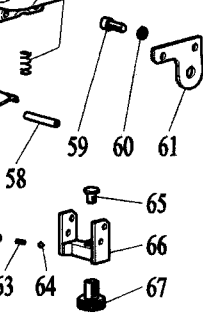
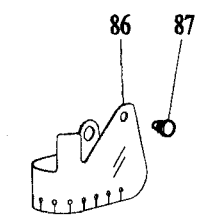
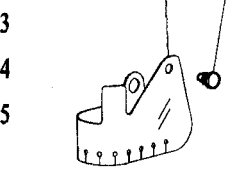
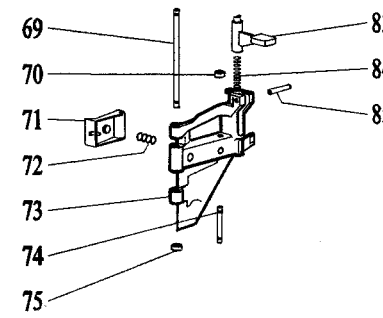
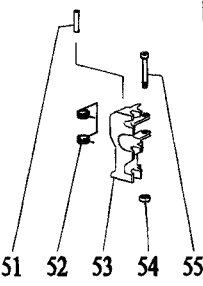


111 - ACCESSORIO PER GANCIO
HANGER ACCESSORY

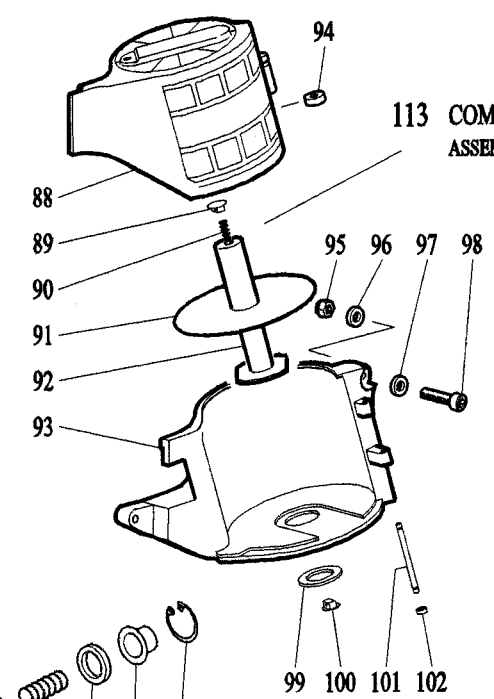
111



112 - COMPLETO
ASSEMBLY



113 - COMPLETO
ASSEMBLY



RIF. COD.

1	B000028A24	43	B000022D07	85	B000026B02
2	C750104A01	44	C745681U03	86	C745692U03
3	B000020A04	45	C451702U01	87	C745694U01
4	C750100A01	46	C745661U01	88	C745731U04
5	C790103U01	47	C745600U01	89	C745752U03
6	B000028C06	48	C745528U01	90	C745753U03
7	C750180A01	49	C745540U03	91	C745756U03
8	D745123U01	50	B000028C11	92	C745757U03
9	B000020A37	51	B000026B03	93	C745722U03
10	C750181A01	52	C745826U03	94	C745727U01
11	C750200A01	53	C745873U03	95	B000023B03
12	B000020A38	54	B000020A78	96	C565180A01
13	B000020A44	55	C745806U03	97	C275702K01
14	D750202A01	56	B000026A19	98	B000028B19
15	B000020A42	57	D750441A01	99	C745750U01
16	C750162A01	58	B000026A11	100	C745752U05
17	C750246A03	59	B000028B04	101	C745733U03
18	B000020A44	60	B000022A01	102	B000020A78
19	D750243A01	61	C745700U03	103	D745123U01
20	B000020A76	62	B000027A02	104	D750202A01
21	B000020B16	63	C755665K01	105	D750243A01
22	D745226U05	64	B000024A04	106	D745226U05
23	D745241U05	65	C790666U01	107	D745241U05
24	B000020A43	66	C745527U01	108	D745304U01
25	C745244U03	67	C745666U01	109	D750361A01
26	B000020B02	68	B000028B26	110	D450283A01
27	B000020B01	69	C745524U03	111	C750105A01
28	D745304U01	70	B000020A78	112	D745552U03
29	B000020A02	71	C745872U03	113	D745726U03
30	B000020B11	72	C745851U03		
31	B000020A02	73	C745551U03		
32	D750361A01	74	C745852U03		
33	B000020A19	75	B000020A78		
34	B000020A19	76	B000020B06		
35	B000026A12	77	C745849U03		
36	D750411A02	78	B000020B14		
37	C450262A01	79	C745842U03		
38	C430401A02	80	C745850U03		
39	B000020A42	81	C745885U03		
40	D450283A01	82	B000021A05		
41	C745261U01	83	C745765U03		
42	B000023B03	84	C745766U03		

Codice **A745000U03**Modello **M45**
Tipo Punto **CN**
Lungh. min. **25 mm.**
Lungh. max. **60 mm.**Kode **A745000U03**Modell **M45**
Klammer Typ **CN**
Min. Länge **25 mm.**
Max. Länge **60 mm.**Code **A745000U03**Model **M45**
Staple type **CN**
Min. length **25 mm.**
Max. length **60 mm.**Code **A745000U03**Modèle **M45**
Agrafe type **CN**
Longueur min. **25 mm.**
Longueur max. **60 mm.**Código **A745000U03**Modelo **M45**
Grapa tipo **CN**
Largueza min. **25 mm.**
Largueza max. **60 mm.**Codigo **A745000U03**Modelo **M45**
Tipo de agrafe **CN**
Largura min. **25 mm.**
Largura max. **60 mm.****DATI TECNICI**Peso: **2430 gr.**
Dimensioni: **134-280-274 mm.**
Consumo aria: **2,00 NI/colpo (6 bar)**
Pressione min.: **5,0 bar**
Pressione max.: **8,0 bar****TECHNISCHE DATEN**Gewicht: **2430 gr.**
Abmessungen: **134-280-274 mm.**
Luftverbrauch: **2,00 NI/pro Schlag (6 bar)**
Min.Betriebsdruck: **5,0 bar**
Max.Betriebsdruck: **8,0 bar****TECHNICAL FEATURES**Weight: **2430 gr.**
Dimensions: **134-280-274 mm.**
Air consumption: **2,00 NI/shot (6 bar)**
Min.working pressure: **5,0 bar**
Max.working pressure: **8,0 bar****DONNEES TECHNIQUES**Poids: **2430 gr.**
Dimensions: **134-280-274 mm.**
Consommation d'air: **2,00 NI/coup (6 bar)**
Pression de fonction min.: **5,0 bar**
Pression de fonction max.: **8,0 bar****DATOS TECNICOS**Peso: **2430 gr.**
Dimensiones: **134-280-274 mm.**
Consumo de aire: **2,00 NI/disparo (6 bar)**
Presion min.: **5,0 bar**
Presion max.: **8,0 bar****CARACTERISTICAS TECNICAS**Peso: **2430 gr.**
Dimensões: **134-280-274 mm.**
Consumo de ar: **2,00 NI/disparo (6 bar)**
Pressão min.: **5,0 bar**
Pressão max.: **8,0 bar****B745040U05 O-Ring Kit****POTENZA ACUSTICA**DIRETTIVA 89/392 CEE
prEN 12549 (1999)
UNI EN ISO 3744 (1997)
LwA= **89,2 (dB)**
LpA 60S 1M= **81,9 (dB)****SCHALLEISTUNG**EWG RICHTLINIE 89/392
prEN 12549 (1999)
UNI EN ISO 3744 (1997)
LwA= **89,2 (dB)**
LpA 60S 1M= **81,9 (dB)****NOISE POWER**EEC DIRECTIVE 89/392
prEN 12549 (1999)
UNI EN ISO 3744 (1997)
LwA= **89,2 (dB)**
LpA 60S 1M= **81,9 (dB)****PUISSANCE ACOUSTIQUE**DIRECTIVE CEE 89/392
prEN 12549 (1999)
UNI EN ISO 3744 (1997)
LwA= **89,2 (dB)**
LpA 60S 1M= **81,9 (dB)****POTENCIA ACUSTICA**NORMATIVA 89/392 CEE
prEN 12549 (1999)
UNI EN ISO 3744 (1997)
LwA= **89,2 (dB)**
LpA 60S 1M= **81,9 (dB)****POTENCIA ACUSTICA**DIRETTIVA 89/392 CEE
prEN 12549 (1999)
UNI EN ISO 3744 (1997)
LwA= **89,2 (dB)**
LpA 60S 1M= **81,9 (dB)****745/0 U03/07 06/01****VIBRAZIONI PRODOTTE**DIRETTIVA 89/392 CEE
ISO/FDIS 8662-11 (1999)
ah.w.3s= **2,8 (m/s²)****GERAETEBEZOGENER****VIBRATIONSWERT**
EWG RICHTLINIE 89/392
ISO/FDIS 8662-11 (1999)
ah.w.3s= **2,8 (m/s²)****TOOL RELATED VIBRATION****VALUE**
EEC DIRECTIVE 89/392
ISO/FDIS 8662-11 (1999)
ah.w.3s= **2,8 (m/s²)****VALEUR DES VIBRATIONS****PAR LA MACHINE**
DIRECTIVE CEE 89/392
ISO/FDIS 8662-11 (1999)
ah.w.3s= **2,8 (m/s²)****VIBRACION PRODUCIDA**NORMATIVA 89/392 CEE
ISO/FDIS 8662-11 (1999)
ah.w.3s= **2,8 (m/s²)****NIVEL DE VIBRAÇÃO****DO PRODUTO**
DIRETTIVA 89/392 CEE
ISO/FDIS 8662-11 (1999)
ah.w.3s= **2,8 (m/s²)**Serial Nr. **60400973**